

金川集团国际资源有限公司  
Jinchuan Group International Resources Co. Ltd



# Investor Presentation

Jan 2024



## Disclaimer

Statements in this presentation, other than historical facts, that address exploration activities and mining potential are “forward-looking” statements and are not statements of fact. These statements are generally identified by words such as “believes,” “expects,” “predicts,” “intends,” “projects,” “plans,” “estimates,” “aims,” “foresees,” “anticipates,” “targets,” and similar expressions. The forward-looking statements, including but not limited to assumptions, opinions and views of Jinchuan Group International Resources Co. Ltd (“the Company”) or information from third party sources, contained in the presentation are based on current plans, estimates, assumptions and projections and involve uncertainties and risks.

The directors and management of the Company are of the belief that the expectations expressed in such forward-looking statements are based on reasonable assumptions, expectations, estimates and projections. However, such statements should not be construed as being guarantees or warranties (whether express or implied) of future performance. There can be no assurance that forward-looking statements will prove to be accurate, as actual results and future events could differ materially from those anticipated in such statements. Factors that could cause developments to differ materially from those statements expressed in this presentation include, without limitation, the results of further exploration activities, technical analysis, general economic and business conditions, industry trends, competition, changes in government regulations, interest rate fluctuations, currency fluctuations, changes in business strategy or development plans and other risks.

Neither the Company, its directors, its management, its advisors nor any of their affiliates represent or guarantee that the assumptions underlying such forward-looking statements are free from errors nor do they accept any responsibility for the future accuracy of the opinions expressed in this presentation. No obligation is assumed to update any forward-looking statements.

No representation or warranty, expressed or implied, is made and no reliance should be placed on the accuracy, actuality, fairness, or completeness of the information presented. None of the Company, its advisors or any of their respective affiliates, directors, officers, employees and advisors nor any other person shall have any liability whatsoever for any losses arising, directly or indirectly, from any information contained in the presentation. This presentation and information made available does not constitute an offer or invitation to purchase or subscribe for any shares of the Company, and no part of this presentation shall form the basis of, or be relied upon in connection, with any contract or commitment.

By accepting this presentation you acknowledge that you will be solely responsible for your own assessment of the market position of the Company and that you will conduct your own analysis and be solely responsible for forming your own view of the potential future performance of the Company’s business.

Neither the delivery of this presentation nor any further discussions of the Company with any of the recipients shall, under any circumstances, create any implication that there has been no change in the affairs of the Company since such date.

# Contents

1 **OVERVIEW**

2 MINING OPERATIONS

3 GLOBAL OPERATIONS

4 INVESTMENT HIGHLIGHTS

5 Q&A





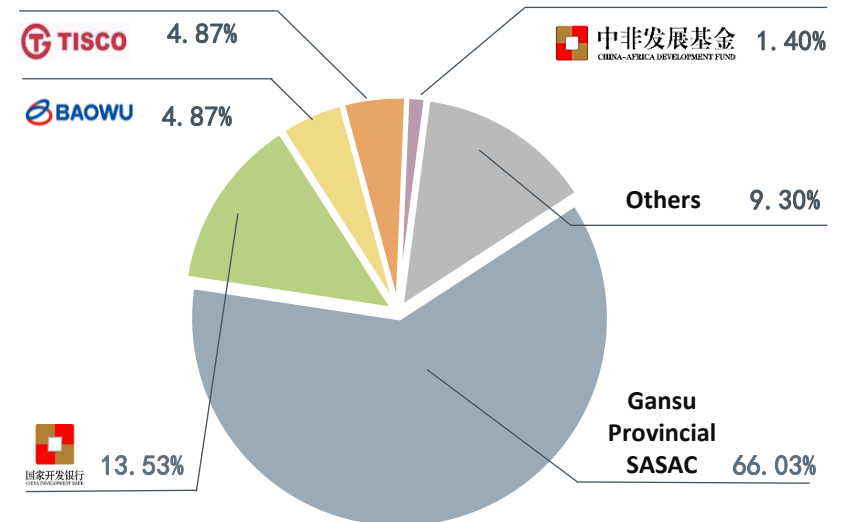
# Overview - Jinchuan Group

- In 2022, Jinchuan Group was rated as the fourth largest cobalt and nickel producer in the world. Its annual production of copper ranked fourth in China and its PGM output ranked first in Asia.
- Impressive annual capacity:
  - 230,000 tons of nickel
  - 1.1 million tons of copper
  - 17,000 tons of cobalt
  - 10,000 kilograms of Platinum Group Metals(PGM)
  - 30 tons of gold
  - 600 tons of silver
  - 200 tons of selenium
  - 5.6 million tons of chemical products
- Owns world's 3rd largest Cu-Ni sulfide deposit and serves as both China's largest and world's leading nickel and cobalt production base and PGM refining center.
- With a global presence across 12 mineral deposits, and engage in the exploration, mining, refining, and processing of nickel, copper, cobalt, and PGM.
- Located in Jinchang city, Gansu province, is renowned as the "Nickel Capital of China."

## Awards & Credentials



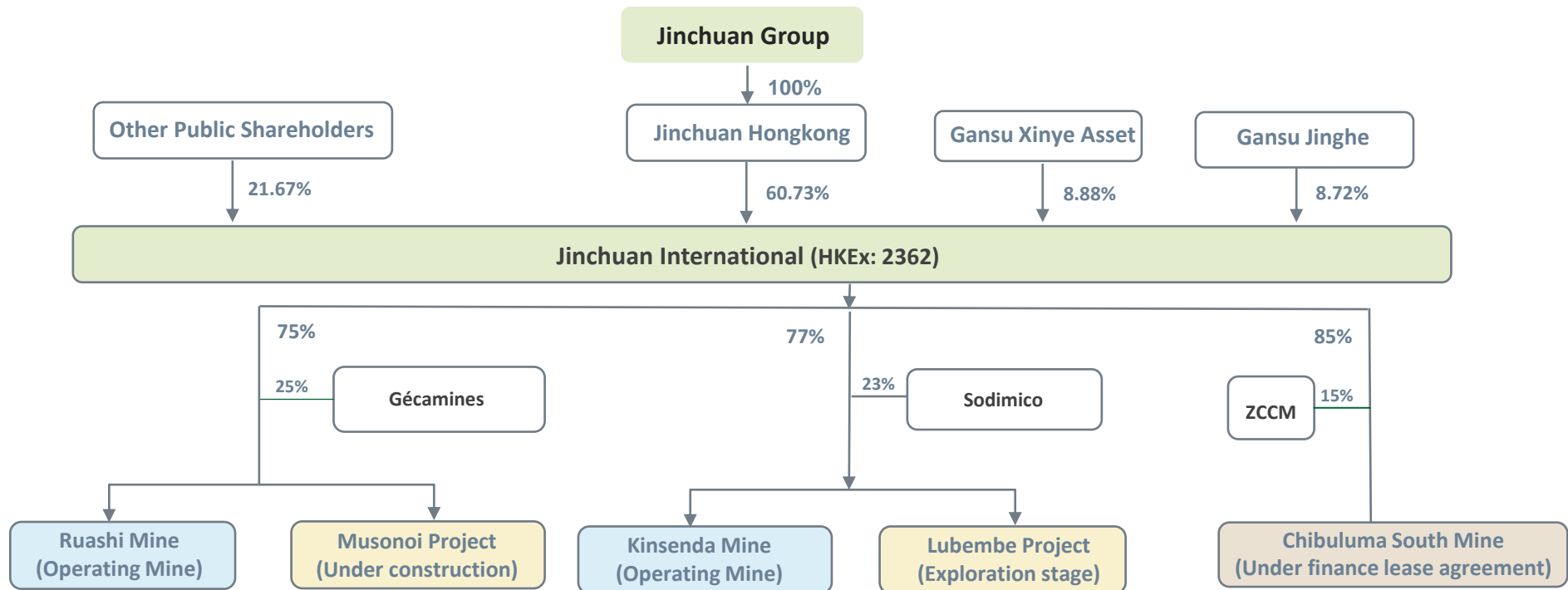
## Shareholding structure





## Overview - Jinchuan International

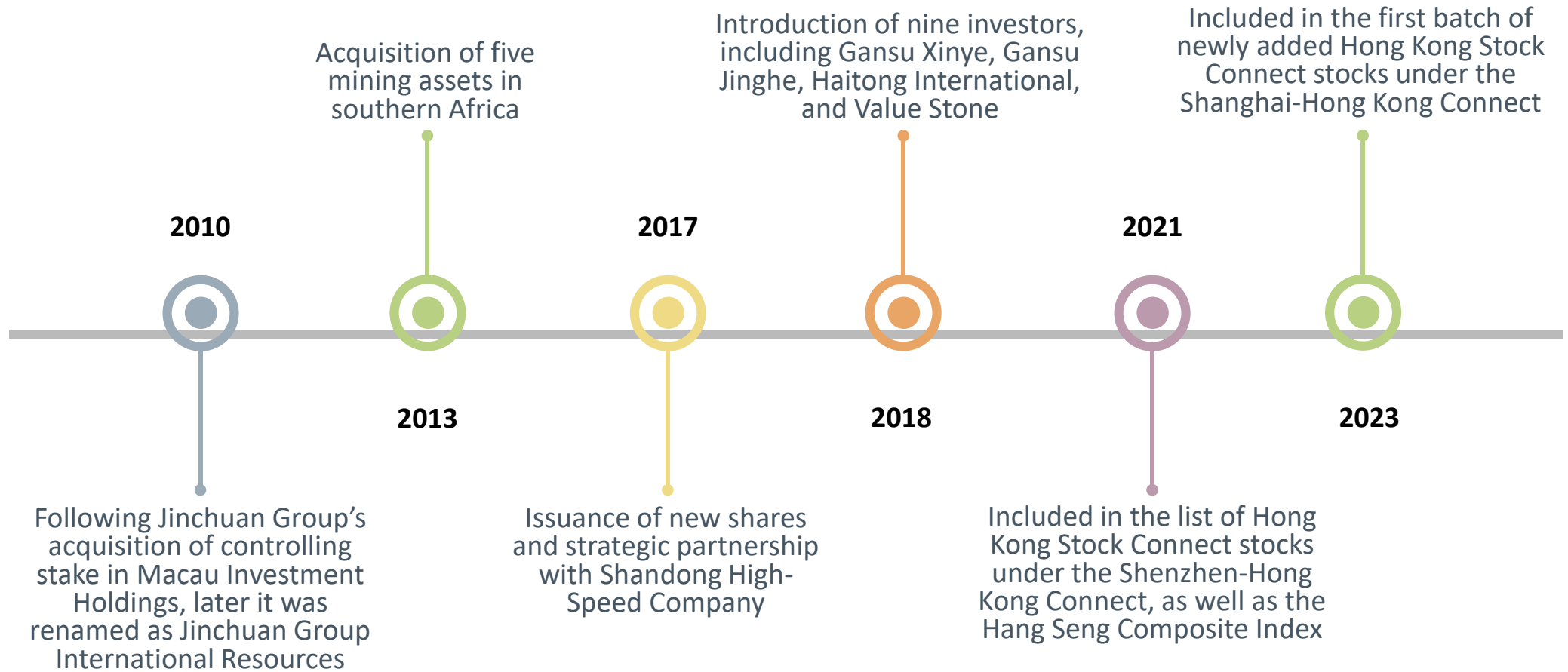
- Jinchuan Group International Resources Co. Ltd (JCI) is a subsidiary of Jinchuan Group and serves as the flagship platform for the group's overseas resource development. It is listed on the main board of the Hong Kong Stock Exchange (stock code: 2362.HK).
- Leveraging strong support from Jinchuan Group, JCI actively builds a multinational business focused on mining development and operations. With significant holdings in Africa, JCI possesses large-scale, high-grade copper and cobalt metal resource mines, engaging in the exploration, extraction, and trading of base metal resources.



(As of 30 June 2023)



## Timeline - Jinchuan International





## Reserves and Resources

(As of 31 Dec 2022)

	Tonnage	Grade		Contained Metals	
	Mt	%	%	kt	kt
<b>Copper - Cobalt</b>		<b>Copper</b>	<b>Cobalt</b>	<b>Copper</b>	<b>Cobalt</b>
Proved	11.5	3.1	0.9	357	100
Probable	23.2	2.4	0.5	548	106
<b>Total reserves</b>	<b>34.7</b>	<b>2.6</b>	<b>0.6</b>	<b>905</b>	<b>206</b>
Measured	17.9	2.8	0.8	493	150
Indicated	40.0	2.2	0.5	867	180
Inferred	15.6	2.2	0.7	338	107
<b>Total resources</b>	<b>73.5</b>	<b>2.3</b>	<b>0.6</b>	<b>1,698</b>	<b>437</b>
<b>Only Cobalt</b>					
Proved	0	5.4	–	1	–
Probable	3.8	5.8	–	220	–
<b>Total reserves</b>	<b>3.8</b>	<b>5.8</b>	<b>–</b>	<b>221</b>	<b>–</b>
Measured	4.2	1.7	–	73	–
Indicated	83.8	2.4	–	1,982	–
Inferred	27.4	2.9	–	804	–
<b>Total resources</b>	<b>115.4</b>	<b>2.5</b>	<b>–</b>	<b>2,859</b>	<b>–</b>
<b>Jinchuan International Summary</b>					
<b>Total reserves</b>	<b>38.5</b>			<b><u>1,126</u></b>	<b><u>206</u></b>
<b>Total resources</b>	<b>188.9</b>			<b><u>4,557</u></b>	<b><u>437</u></b>

# Contents

1

OVERVIEW

2

**MINING OPERATIONS**

3

GLOBAL OPERATIONS

4

INVESTMENT HIGHLIGHTS

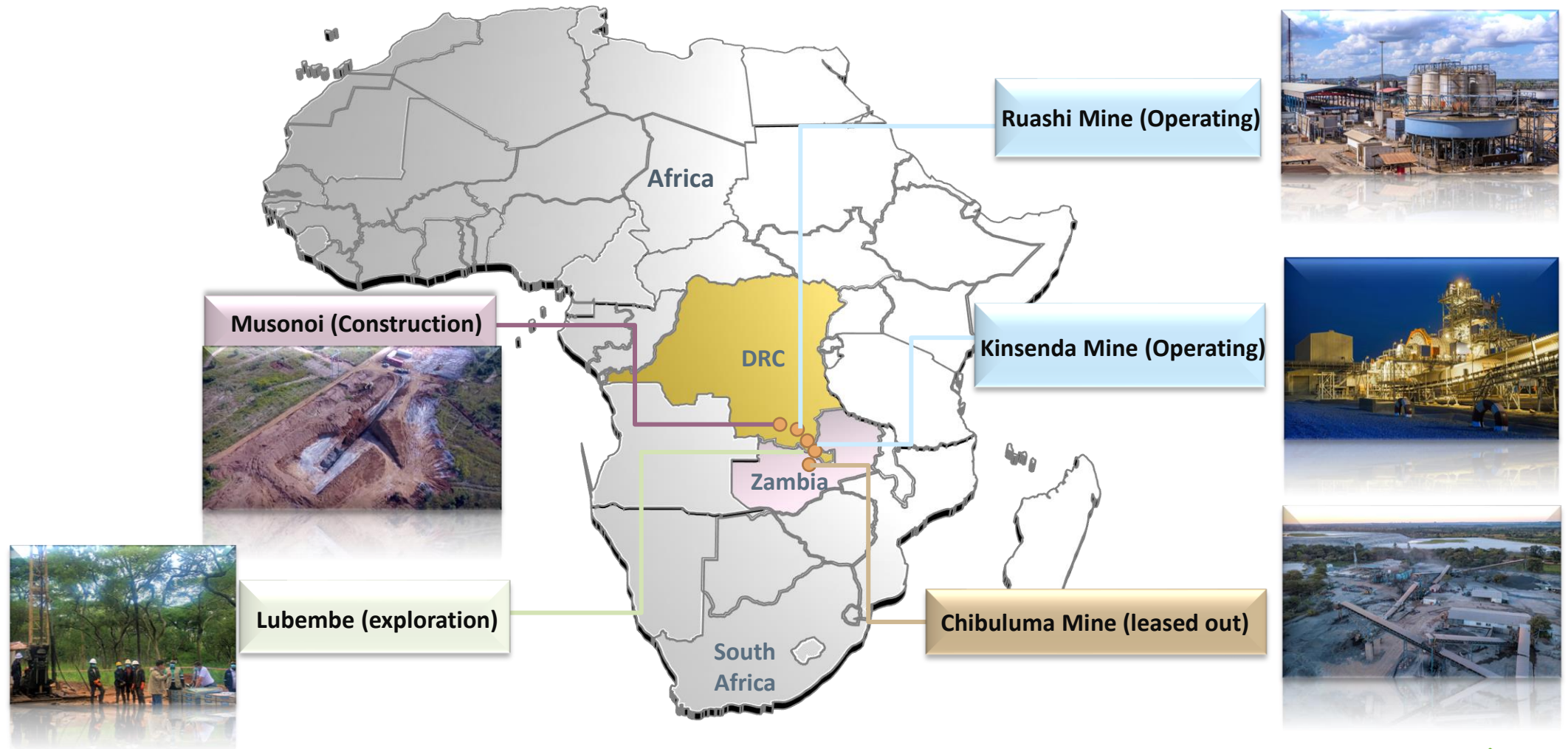
5

Q&A



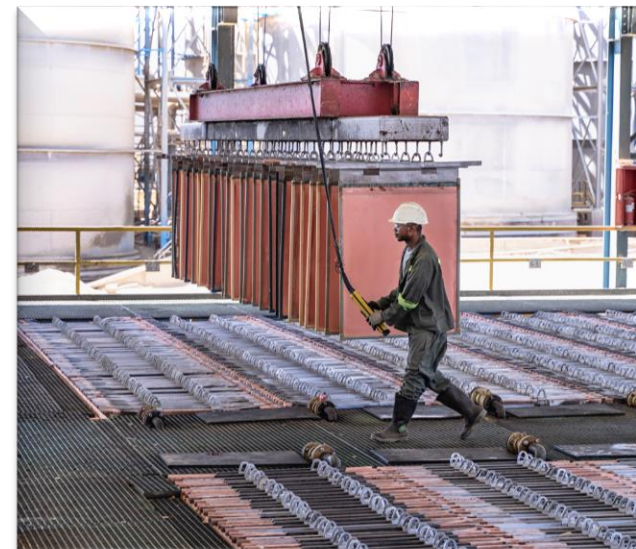


# Geographical Location





## Ruashi Mine



- ❑ Mine type: open-cast oxide copper and cobalt mine with sulphide potential underneath
- ❑ Location: Lubumbashi, Haut Katanga Province, the DRC
- ❑ Ownership: JCI (75%), Gécamines SA (25%)
- ❑ Processing: leach SX-EW processing
- ❑ Products: copper cathode, cobalt hydroxide



## Ruashi Mine

- LoM: 9 years
- Resources: 614kt Cu, 74kt Co
- Reserves: 299kt Cu, 32kt Co
- Ruashi Mine completed the construction of a 600kt per annum floatation and magnetic separation plant which is targeted to treat low grade oxide and sulphide material via magnetic separation and floatation. The successful construction of the floatation and magnetic separation plant will further increase the mine life of Ruashi.
- Ruashi's main mining license (PE578) was renewed for a period of 15 years in 2021 and will expire in September 2036.
- Copper cathode and cobalt hydroxide are sold to international trading companies through offtake agreements

**Reserves and Resources Summary** (as of 31 Dec 2022)

	Tonnage	Grade		Contained metals	
		Mt	%	%	kt
		Cu	Co	Cu	Co
Proved	–	3.1	0.1	–	–
Probable	14.5	2.1	0.2	299	32
<b>Total reserves</b>	14.5	2.1	0.2	299	32
Measured	0.4	2.3	0.4	9	1
Indicated	25.7	2.1	0.2	551	64
Inferred	2.6	1.9	0.3	50	9
<b>Total resources</b>	28.7	2.1	0.3	614	74



## Kinsenda Mine



- Mine type: underground copper mine
- Location: Haut Katanga Province, the DRC
- Ownership: JCI (77%), Sodimico (23%)
- Product: copper concentrates
- LoM: 12 years
- One of the world's highest grade copper deposits and has good access to infrastructure



## Kinsenda Mine

- LoM: Current mine life is more than 12 years and there exists substantial additional ore resources that could extend the mine life to 20 years and beyond
- Resources: 950kt Cu; Reserves: 221kt Cu
- Kinsenda Concentrator completed trial run in May 2015 → Production started in Oct 2016 → First batch of concentrates exported in Nov 2017
- Kinsenda's main mining license (PE101) was renewed for 15 years and will expire in October 2036
- Kinsenda Mine is developing a second ramp decline as a capital development project to open up the East Mine Resources
- Obtained a 10-year long-term loan of \$225 million from China Development Bank in 2014.

Reserves and Resources Summary (as of 31 Dec 2022)

	Tonnage	Grade	Contained metals
	Mt	%	kt
		Cu	Cu
Proved	0.0	5.4	1
Probable	3.8	5.8	220
<b>Total reserves</b>	<b>3.8</b>	<b>5.8</b>	<b>221</b>
Measured	0.7	4.4	29
Indicated	10.0	5.1	513
Inferred	9.9	4.1	408
<b>Total resources</b>	<b>20.6</b>	<b>4.6</b>	<b>950</b>

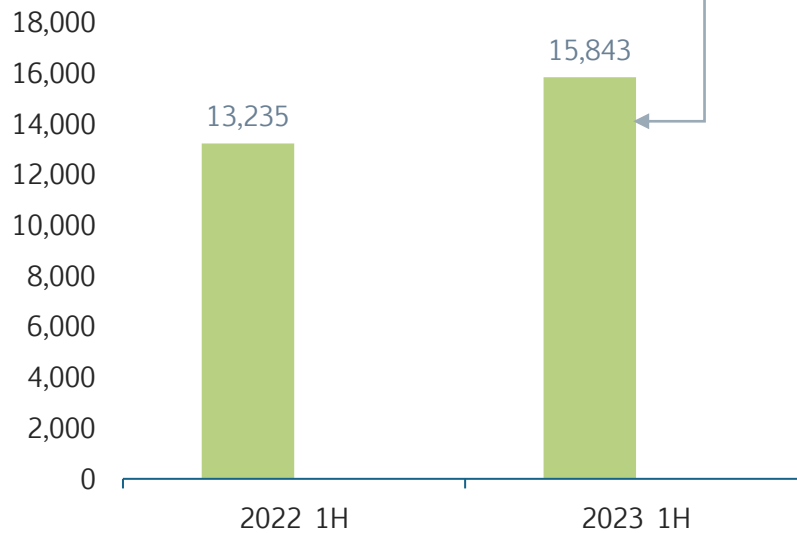


# Kinsenda Mine-Copper

For the six months ended 30 June 2023

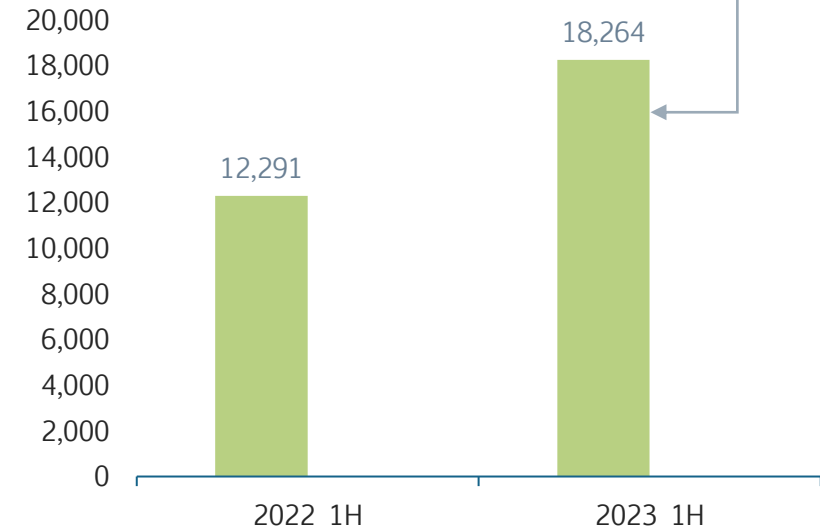
Unit: tons

## Copper Production



Copper production increased by 20% and resulted in an improved copper recovery rate and an 18% higher feed grade

## Copper Sales Volume



With an increase of 49% ,due to the effective destocking of its inventory level in 2023 1H



## Musonoi Project



- ❑ Location: North of Kolwezi town, Lualaba Province, the DRC
- ❑ Ownership: JCI (75%), Gécamines SA (25%)
- ❑ Progress: under construction
- ❑ LoM: 19 years according to ENFI Feasibility Study
- ❑ Resources: 1,085kt Cu, 363kt Co
- ❑ Reserves: 606kt Cu, 174kt Co



## Musonoi Project

- Resources: 1,085kt Cu, 363kt Co
- Reserves: 606kt Cu, 174kt Co
- Grade: Up to 0.9%, making it one of the highest-grade cobalt mines globally
- Production: Average annual cobalt production of 7,400 tons and copper production of 38,000 tons
- Progress: Construction projects have made good progress in 2023
- The group obtained a 10-year long-term loan of \$350 million from China Development Bank for financing the Musonoi project. As of the end of June 2023, a total of \$191 million has been withdrawn from this financing

Reserves and Resources Summary (as of 31 Dec 2022)

	Tonnage	Grade		Contained metals	
	Mt	%	%	kt	kt
		Cu	Co	Cu	Co
<b>Oxide</b>					
Proved	2.7	3.4	1.0	91	28
Probable	0.5	3.3	0.8	16	4
<b>Total reserves</b>	<b>3.2</b>	<b>3.3</b>	<b>1.0</b>	<b>107</b>	<b>32</b>
Measured	4.7	3.1	1.0	144	48
Indicated	1.2	1.9	0.8	22	9
Inferred	1.4	2.0	0.7	29	10
<b>Total resources</b>	<b>7.3</b>	<b>2.7</b>	<b>0.9</b>	<b>195</b>	<b>68</b>
<b>Mixed+Sulphide</b>					
Proved	8.8	3.0	0.8	266	72
Probable	8.2	2.8	0.9	233	70
<b>Total reserves</b>	<b>17.0</b>	<b>2.9</b>	<b>0.8</b>	<b>499</b>	<b>142</b>
Measured	12.8	2.7	0.8	339	100
Indicated	13.1	2.2	0.8	292	107
Inferred	11.6	2.2	0.8	258	88
<b>Total resources</b>	<b>37.5</b>	<b>2.4</b>	<b>0.8</b>	<b>889</b>	<b>295</b>



## Lubembe Project



- ❑ Location: Haut Katanga Province, the DRC
- ❑ Ownership: JCI (77%), Sodimico (23%)
- ❑ Progress: mining license renewed in 2016 and extended for a further 15 years to 2032
- ❑ An infill drilling program was completed



## Lubembe Project

- Resources: 1,909kt Cu
- Grade: The copper grade of the project is 2.0%
- It is a large-scale exploration project with significant cash flow potential as a long-term reserve
- Hydrogeological and engineering geological studies are being carried out to enhance the geological understanding of Lubembe Project
- The deposit is a mixed-type ore that can be economically mined by combining the extraction of oxide and sulfide ores
- Mineral resource model was updated in 2021 and has upgraded a portion of inferred mineral resources category to indicated mineral resources category

**Reserves and Resources Summary** (as of 31 Dec 2022)

	Tonnage	Grade	Contained metals
	Mt	%	kt
		Cu	Cu
Measured	3.5	1.2	44
Indicated	73.8	2.0	1,469
Inferred	17.4	2.3	396
<b>Total Resources</b>	<b>94.8</b>	<b>2.0</b>	<b>1,909</b>



## Chibuluma Mine



- Located in Zambia
- Starting from April 1, 2021, the Chibuluma South Mine (including the Chifupu deposit) and processing plant were leased to an independent third party for a period of five years to realize the remaining value of mining assets.
- As of December 31, 2022, fixed rental income of \$6.16 million has been received.
- In addition to the lease payments, a mining royalty fee corresponding to the quantity of copper ore sold will also be collected monthly.

# Contents

1

OVERVIEW

2

MINING OPERATIONS

3

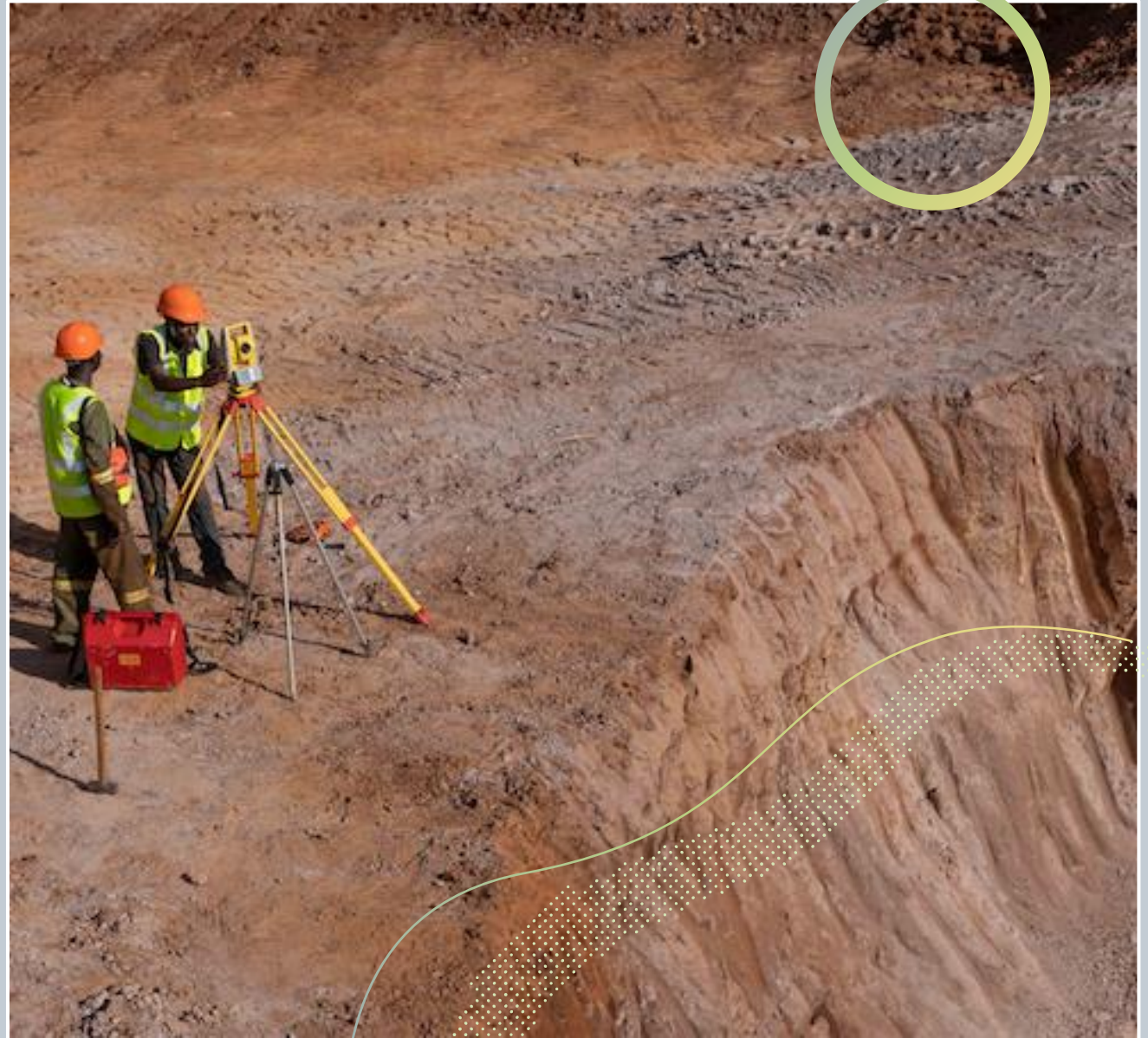
GLOBAL OPERATIONS

4

INVESTMENT HIGHLIGHTS

5

Q&A





## PT. Wanatiara Persada



- ❑ Mainly engaged in nickel laterite resources development, nickel ore and ferronickel production and sales.
- ❑ Location: Maluku-Indonesia
- ❑ Ownership: Jinchuan Group (60%), RKA (40%)
- ❑ In November 2016, the Company invested 658 million USD to build the large-scale smelter with annual capacity 200,000 tons of ferronickel in North Maluku, Indonesia.
- ❑ Annual capacity 200,000 tons ferronickel at Ni 15%, symbolized Jinchuan entered the nickel oxide field after half a century running the nickel sulfide business



## Project PT KRS



- ❑ The Project PT KRS under construction is located in the IWIP Park in Central Halmahera Regency, North Moluccas Province, Indonesia.
- ❑ When completed, the project will consist of four 60,000 KVA RKEF ferronickel production lines, a 380,000 kW coal –fired power plant and corresponding ancillary facilities.
- ❑ The production lines after all being put into production will have an annual ferronickel output equivalent to 55,000 tons of nickel metal.
- ❑ Following the first production line which will start producing iron in March 2022 and start production ramp-up, the other production lines will also be gradually put into production.
- ❑ Jinchuan owns a 50.1% interest in the Project PT



## Project PT USMI

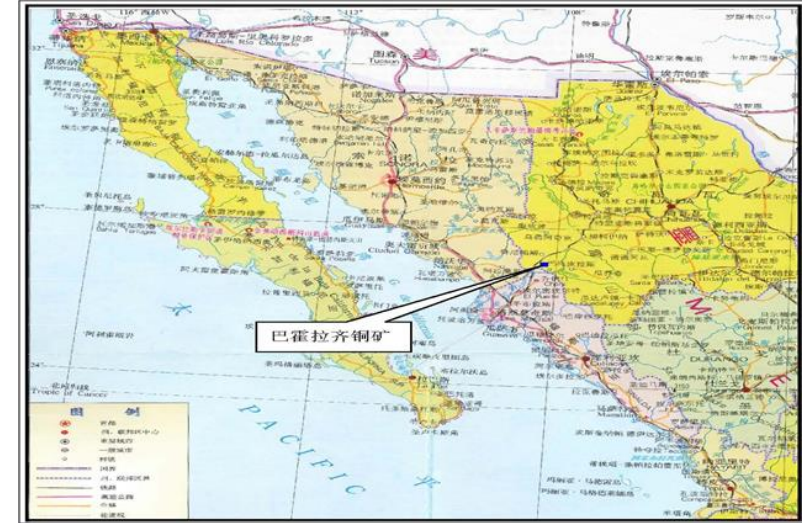


- ❑ Located in the IWIP Park in Central Halmahera Regency, North Moluccas Province, Indonesia.
- ❑ When completed, the project will consist of four 60,000 KVA RKEF production lines and corresponding nickel matte ancillary facilities.
- ❑ Annual nickel matte output equivalent to 50,000 tons of nickel metal.
- ❑ Jinchuan owns a 50.1% interest in the Project PT



## Bahuerachi Copper Mine in Mexico

- ❑ The main metals are copper, gold, silver and molybdenum.
- ❑ Acquired in March 2008 and owns 100% of the Bahuerachi Copper Mine in Mexico.
- ❑ Located: in Urique, Chihuahua, Mexico in North America, at the intersection of three states, close to the border of Sonora and about 5 km northeast of Sinaloa.
- ❑ Large-scale polymetallic symbiotic porphyry copper mine
- ❑ LoM:14 years
- ❑ Completed the international bank-level feasibility study of the project in 2016.
- ❑ To further improve economic benefits, a feasibility study on bioleaching was carried out from 2019 to 2021.





## Wesizwe Platinum



- ❑ Established in August 2003, Wesizwe Platinum Limited is a primary platinum mine developer located in North West province, South Africa. Listed on the Johannesburg Stock Exchange under the symbol “WEZ” since December 2005.
- ❑ Core project is Bakubung platinum mine, which consists of an underground mine and auxiliary ore dressing plants.
- ❑ With an investment of \$126.5 million
- ❑ Ownership: Jinchuan Group holds 55% China-Africa Jinchuan Investment Limited’s equity, which equals to a 28 percent stake in Wesizwe.
- ❑ The mining project is currently under construction.



## Tibet Tianyuan Mining Resources Development



- ❑ Commodities: Copper、 Gold、 Silver
- ❑ Mine's type: Open Pit
- ❑ Ownership: Jinchuan Group (55%), Zijin (45%)
- ❑ The estimated investment of the company's project totals 7.79 billion yuan (approximately \$1.16 billion).
- ❑ At present, preparation work in the mining and dressing industrial zone such as access to water supply, electricity and roads, as well as land leveling, has been basically completed.



## Munali Nickel Mine



- ❑ Located 85 kilometers south of Lusaka, capital of Zambia
- ❑ Munali Nickel Mine consists of one underground mine and one concentrator
- ❑ Expected to generate 8,500 metric tons of nickel ore concentrate annually.

# Contents

1

OVERVIEW

2

MINING OPERATIONS

3

FINANCIAL PERFORMANCE

4

**INVESTMENT HIGHLIGHTS**

5

Q&A





## Investment Highlights



### Extremely rare & mature miner of copper and cobalt in HK market

1. One of the two companies listed on the Hong Kong Stock Exchange that are among the world's top ten cobalt mining companies.



2. High-quality copper and cobalt resources.



3. Competitive C1 cash costs.



4. A well-diversified and highly promising asset portfolio.



5. An experienced board of directors and executive team



6. Strengthening ESG management to promote sustainable development.





7. Fundamental factors supporting the copper and cobalt markets.



## 1. One of the only two HK-listed cobalt producers and a top 10 global cobalt listed producer

### Top ten cobalt resource producers globally in 2022

Rank	Company	Country	Equity production/t	Market Share
1	Glencore	Switzerland	40,176	19.66
2	ERG	Kazakhstan	20,000	9.79
3	CMOC 	China	16,229	7.94
4	Gécamines	DRC	14,612	7.15
5	CNMC	China	6,848	3.35
6	Shalina Resources	DRC	5,225	2.55
7	Jinchuan International 	China	4,768	2.34
8	Norilsk Nickel	Russia	4,450	2.17
9	Huayou Cobal	China	4,290	2.10
10	BHP Group	Australia	3,588	1.75

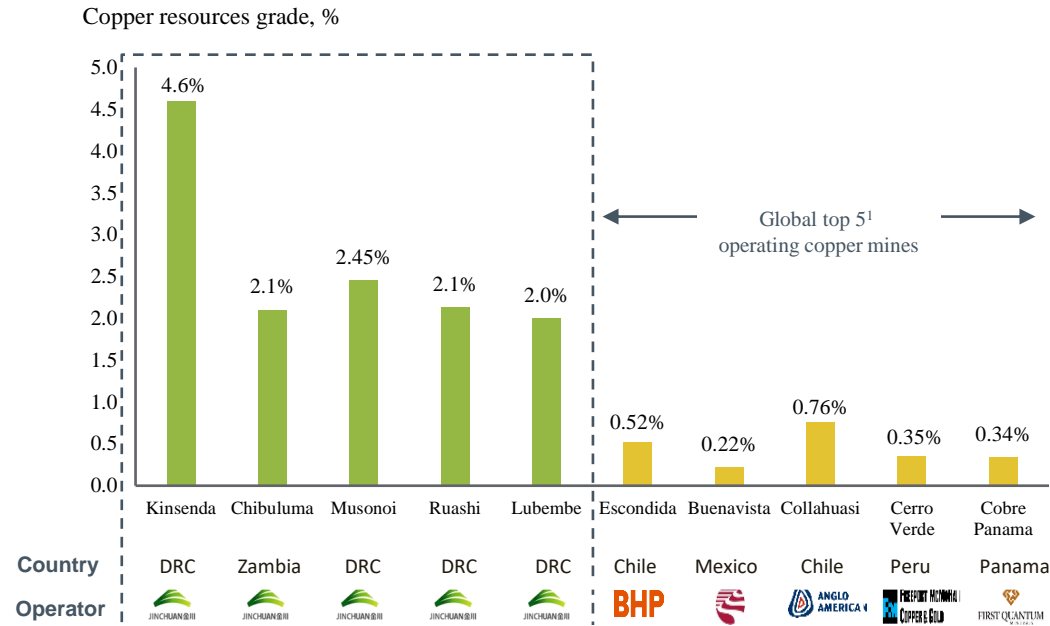
Data source: S&P Mining. Data as of December 31, 2022.



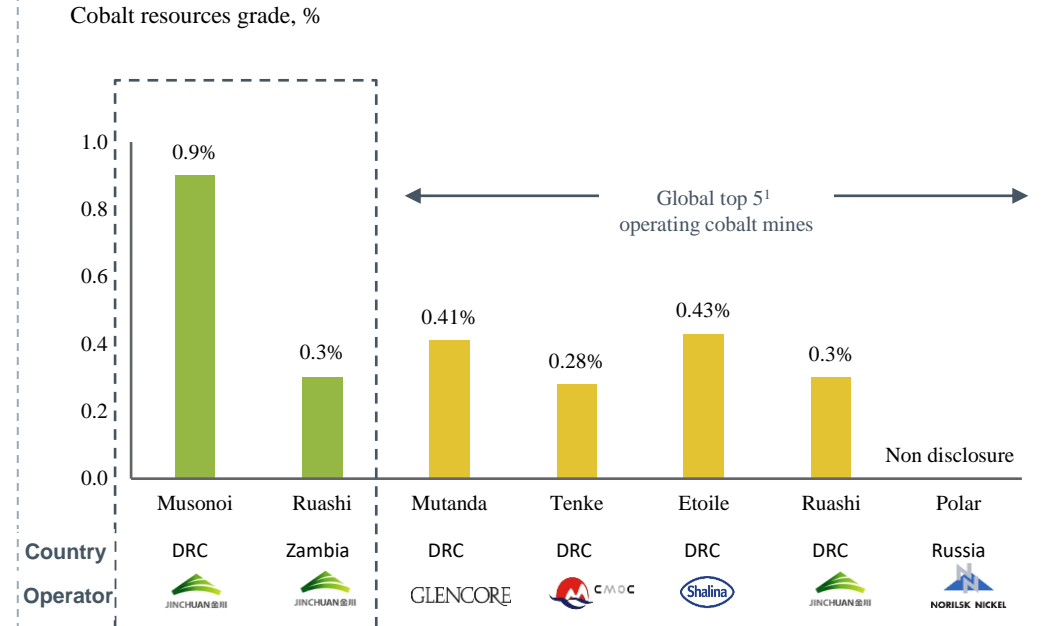
## 2. Top-of-the-class copper & cobalt grades and highly competitive cost profile

Data as of December 31, 2022.

### Benchmarking of Cu grade against top 5 producing copper mines



### Benchmarking of Cobalt grade against top 5 producing cobalt mines



Data source: S&P Mining and Wood Mackenzie.

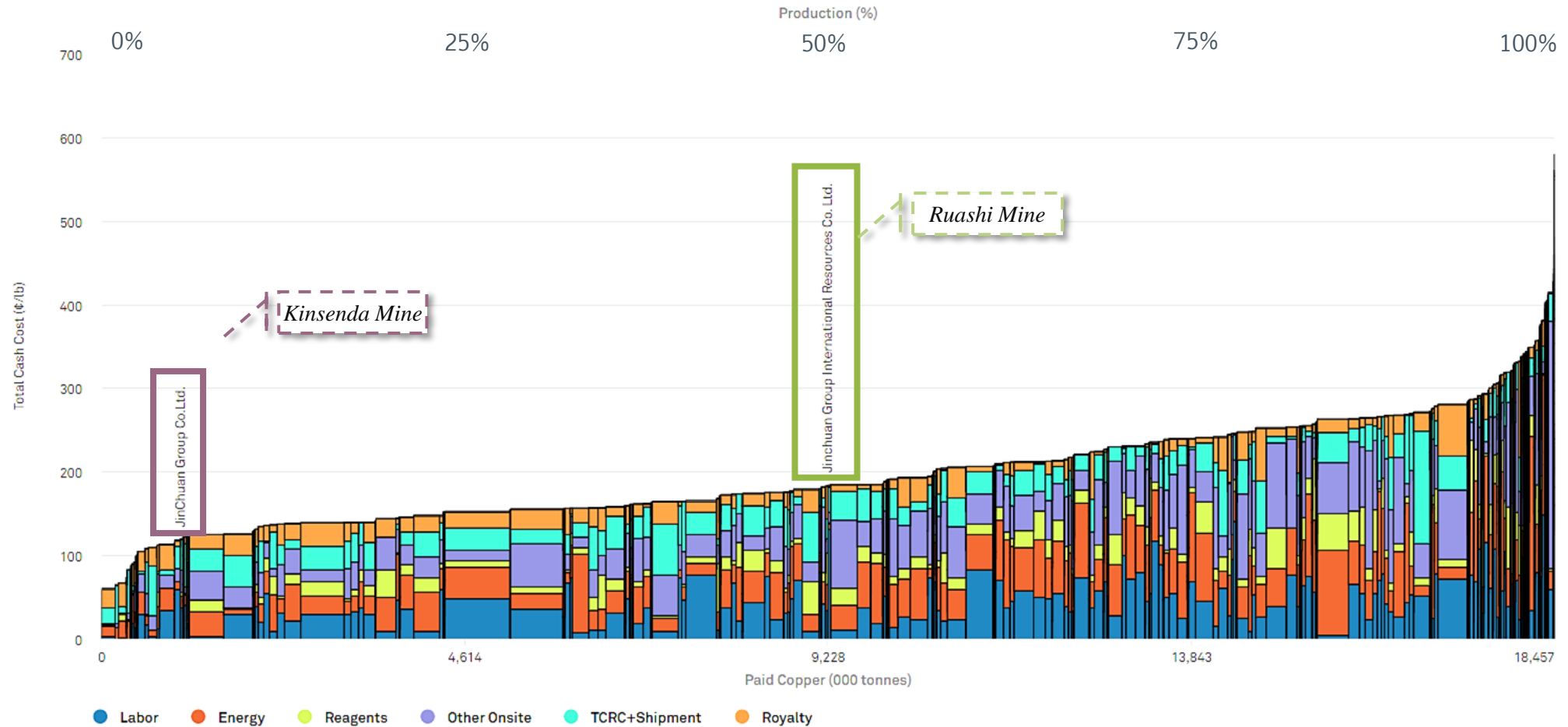


### 3. Highly competitive cash cost position

#### 2022 Copper Production Ranked on Total Cash Cost\*

Actual Money of the Day

Data as of December 31, 2022.



Data source: S&P Mining

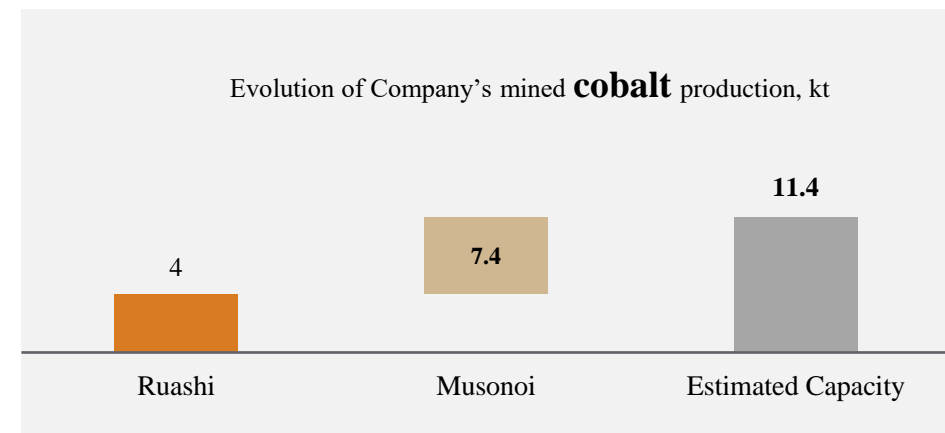
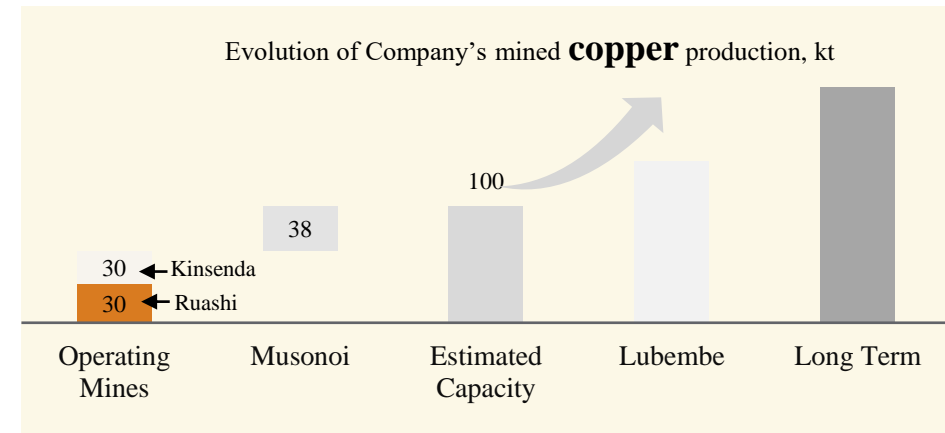


## 4. A well-diversified and highly promising asset portfolio

Musonoi is a short-term priority and will become an important driver of profit growth for the company.



Lubembe Mine represents a substantial and economically impactful venture with extensive reserves that will yield benefits over an extended period.





## 5. An experienced board of directors and executive team



**Cheng Yonghong**  
**Executive Director and Chairman of the Board**

- Mr. Cheng joined the Group as a director of Metorex in April 2015
- Mr. Cheng serves as the Chairman and Chief Executive Officer of Metorex, and also the Head of the African Region of JCG.
- He is a technical professional with extensive operational management experience in nonferrous pyrometallurgy and hydrometallurgy



**Gao Tianpeng**  
**Executive Director & CEO**

- During 30-year career at the Company, Mr. Gao has taken on various responsibilities, including cost management, financial management, international trade management, risk management.
- Mr. Gao also in charge of foreign exchange business, capital operation, the equity division reform of Jinchuan Group, and overseeing of daily affairs of the Board



**Liu Jian**  
**Non-Executive Director**

- Since 1994, Mr. Liu had worked in various positions within JCG and its subsidiaries, including the deputy general manager of the costing department, internal audit and risk management department of JCG



**Wang Qiangzhong**  
**Non-Executive Director**

- Mr. Wang has senior engineer qualification and extensive experience in financial management and operations management.
- Mr. Wang currently holds the position of director of Baiyin Nonferrous Group Co., Ltd.



**YEN Yuen Ho, Tony**  
**Independent Non-Executive Director**

- Mr. Yen was appointed as an independent non-executive director of the Company since Aug 2010
- Mr. Yen is an Adjunct Professor of Beijing Normal University and an Honorary Court Member of the court of HKUST



**Poon Chiu Kwok**  
**Independent Non-Executive Director**

- Mr. Poon has 25+ years of experience in regulatory affairs, corporate finance, listed companies governance and management;
- Mr. Poon holds a master's degree in international accounting, a bachelor's degree both in laws and business studies



**Yu Chi Kit**  
**Independent Non-Executive Director**

- Mr. Yu holds a bachelor's degree in business administration from The Chinese University of Hong Kong
- Mr. Yu has extensive experience in accounting, auditing and company secretarial practice



**Han Ruixia**  
**Independent Non-Executive Director**

- Ms. Han obtained her PhD in Economics from Renmin University of China.
- Ms. Han was head of operations and risk of MEC Advisory Limited



## 6. Strengthening ESG management to promote sustainable development



Fire Truck Usage Training for Employees



Close Cooperation with the Government



Actively Donating to Local Communities



Conducting Various Training Programs for Employees



Employee Participation in Local Environmental Protection Activities



Planting Monitoring and Conservation Programs



## 6. Strengthening ESG management to promote sustainable development

### ➤ **Extensive Coverage: Compliance extends from leading standards to domestic and international guidelines**

GRI Standards, TCFD recommendations, SASB Standards, Exchange guidance, and CASS-CSR 5.0 are fully implemented.

Future reports will incorporate the latest disclosure guidelines such as ISSB, with a deeper focus on TCFD recommendations for ensured compliance and leadership.

### ➤ **Integration of ESG Principles into Daily Operations**

The company has established dedicated management structures at the operational level for environmental, safety, and community relations. Each operating region has designated personnel responsible for managing and supervising ESG and compliance risks. ESG policies are consistently implemented across different levels and flexibly adapted to local conditions.

### ➤ **Targeted Management Approach**

Tailored measures are developed and implemented based on specific environmental management dimensions (e.g., energy, waste, pollution) and the characteristics of each mining site. Compliance with local laws and regulations is ensured, while meeting the practical management needs of the mining sites.

### ➤ **Data-Driven Approach**

Robust historical accumulation of quantitative data. The annual ESG reports disclose extensive quantitative data on environmental, social, and governance aspects, with granularity in each area. The ESG appendix presents 318 indicators for 2022 (showcasing individual performance of four mining sites), ensuring comprehensive coverage and disclosure of key performance metrics such as carbon emissions and calculation methods.

### ➤ **High Transparency in Community Contributions**

Transparent disclosure of the amount and support projects provided to local communities in the community management process.

Demonstrates the effective implementation of the company's support for local community development, enhancing donation transparency and showcasing the company's commitment to mutually beneficial partnerships with local communities.



## 6. Strengthening ESG management to promote sustainable development

- In 2022, a total of **118** stakeholder questionnaires were distributed by JCI. Out of these, 23 questionnaires were internal, and 95 were external. The quantity of questionnaires was sufficient, and they effectively covered six categories of stakeholders both domestically and internationally. The sample distribution adhered to relevant principles and requirements.
- Regarding the selection of material issues, a total of **26** ESG material issues were identified in 2022. The identification process was scientifically effective, and the results were consistent with industry attributes. These material issues were extensively disclosed in the report.

ESG material issues of JCI in 2022		
Environment	1	Environmental Management System
	2	Water Resource Management
	3	Waste Management
	4	Energy Management
	5	Climate Change and Carbon Emission Management
	6	Prevention and Handling of Environmental Emergencies
	7	Land Use and Biodiversity Conservation
	8	Tailings Management
Social	9	National and Local Economic Contribution
	10	Industry Leadership
	11	Product Responsibility and Safety
	12	Innovation, Development, and Intellectual Property Management
	13	Employment Diversity and Inclusivity
	14	Employee Rights Protection and Compensation Benefits
	15	Employee Safety and Health
	16	Employee Development and Training
	17	Customer Service and Rights Protection
	18	Supply Chain Management
	19	Community Engagement and Investment
	20	Philanthropy and Volunteer Services
Corporate Governance	21	Corporate Governance
	22	Business Ethics
	23	Risk Management
	24	Compliance Operations
	25	Stakeholder Communication
	26	Responsible Tax Principles



## 7. Supported by the fundamental aspects of the copper and cobalt markets

### Copper

- In 2023, large-scale copper mine shutdowns in Peru and Panama, coupled with slower global copper mine supply growth and disruptions in the smelting sector, have contributed to a significant decline in copper production in Chile, the world's largest copper producer. Global low inventories have supported copper prices.
- Wood Mackenzie's Metal and Mining Division predicts a severe shortage of copper inventory by 2030, reaching millions of tons.
- During the 14th Five-Year Plan period, China's focus on power construction will be on grid transformation, energy upgrading, and the vigorous development of new energy. It is estimated that China's copper demand for electricity will reach 6.963 and 7.172 million tons in 2024 and 2025, respectively.

### Cobalt

- ◆ The cobalt industry is expected to face supply-demand gaps of 3,011 and 12,551 tons in 2024 and 2025, respectively. Cobalt demand is projected to reach the level of 230,400 tons in 2025, with an average compound annual growth rate of up to 10%.
- ◆ The growth drivers for cobalt are mainly concentrated in the field of power batteries for new energy vehicles and the 3C sector of non-power batteries. Other areas such as high-temperature alloys and hard alloys are expected to maintain demand growth rates of 4% and 1%, respectively.
- ◆ The UK Cobalt Institute predicts that global demand for cobalt will double by 2035 compared to the present.
- ◆ Ford estimates that by 2030, electric vehicles will account for 40% of total vehicle sales, while Bloomberg estimates that by 2040, electric vehicles will account for half of total vehicle sales.

Sources: Bloomberg, Everbright Securities Research Institute, and Antaike



# Q&A



## Contact



**Jinchuan Group International Resources**

**Stock Code: 02362.HK**

**Address: 31/F, United Centre, 95 Queensway,  
Admiralty, Hong Kong**

**Phone: +852 3919 7239**

**Fax: +852 3919 7208**

**Email: [ir@jinchuan-intl.com](mailto:ir@jinchuan-intl.com)**

**Official Website: [www.jinchuan-intl.com](http://www.jinchuan-intl.com)**



**JINCHUAN 金川**